

# Enhancing Accountability and Efficiency in New York's K-12 Education System

---

- Susan Diamond – SullivanArc
- April Gozza - United Way of Dutchess County
- Dave Jolly - Orange County
- John Klassen - M&T Bank
- Richard Lanzarone - Morgan Construction Enterprises, Inc.
- Theresa Mulkins – HealthQuest
- Darrin Raynor - New Hope Community
- Sean Rieber - Rieber Appraisal & Consulting Corp.
- Roy Shemitz - Provident Bank
- Stu Turner - Turner Miller Group
- Jan Whitman -Food Bank of the Hudson Valley



## Improving Efficiency in K-12 education

- Can K-12 School Districts organized along county lines deliver services more efficiently?
- Can Single County Districts improve education quality?
- Rockland County, 8 Districts, 41,000 students chosen as a pilot model
- Union County, NC , 1 District , 41,000 students chosen for comparison of Administrative structure

### We looked at:

- Administrative FTE count
- School Consolidation opportunities
- Other potential operating savings



# Enhancing Accountability in the Educational System

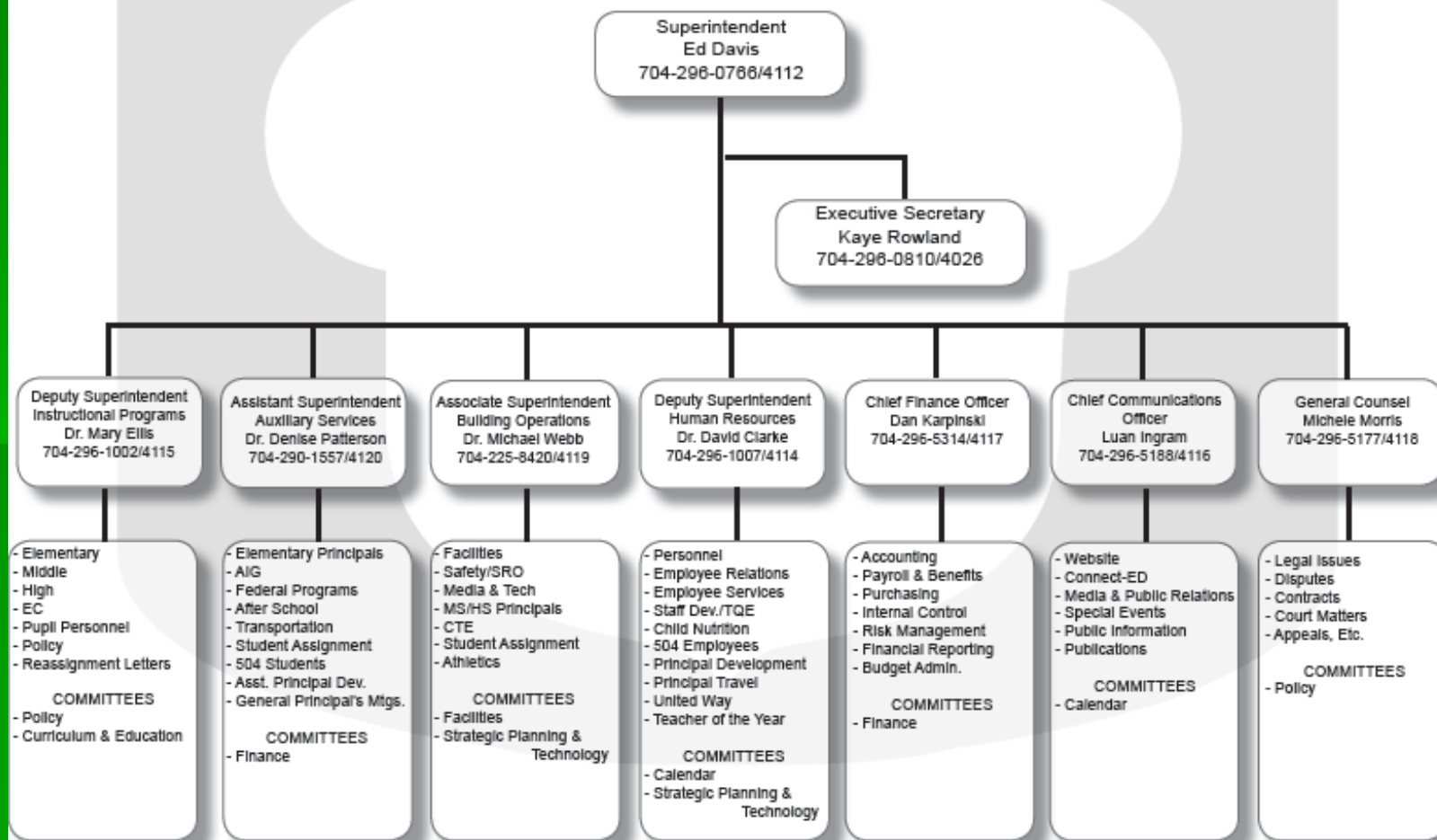
- **Teacher Evaluation:**  
*consistency, performance and accountability is the key!*
- **The Removal of Inadequate Teachers:**  
*it is not about tenure, its about why the teachers are in the posts in the first place*
- **State Licensing Provision:**  
*to achieve reform of the educational system we must include more rigorous preparation of teachers and enhanced state licensing standards beyond current standards.*



## Summary Comparison of Rockland County, NY & Union County, NC

	Rockland County, NY	Union County, NC
Students	41,616	40,147
Schools	65	53
Area sq miles	199	640
Population	309,173	208,292
# Townships	5	9
Median Household Income	\$ 84,076.00	\$ 62,428.00
High School grad or higher* (Educational Attainment)	84.1%	83.6%
% pop < 18 years	30.1	27.7
Average Teacher Salary	\$ 66,550.00	\$ 46,850.00
# school Districts	8	1
# FTE's	6417	5146
Cost per Student	\$ 23,145	\$ 8,657
Cost per Student excl transpt	\$ 21,644	\$ 8,182
Total K-12 Budget	\$ 963,217,009	\$ 347,548,385

# ORGANIZATIONAL CHARTS



## FINDINGS

- Projected savings of \$75.5 million
- Elimination of 40 Administrative FTE's
- Closing of 10 schools, 1 HS, 3 MS, 6 Elementary
- Operational savings in Purchasing, Finance, Human Resources, Transportation, Facilities, IT , Legal, etc.
- Additional Capital Avoidance savings
- More resources for students
  - Richer curriculum
  - AP & Elective Courses
  - Extracurricular Activities

